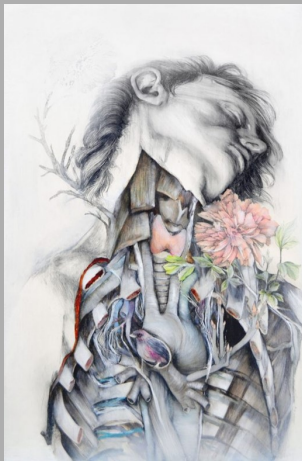


# X-RAY/INSIDE/OUTSIDE

VISUAL ARTS 30 · MR. BAMFORD · bbamford@lssd.ca



Norval Morrisseau



Nunzio Paci



Frida Kahlo

We have spent time in class drawing people and objects from life, looking at their forms, volumes, shapes and textures. In this assignment you will be looking more imaginatively at the world around you as you create an 'X-Ray' or 'Inside/Outside' drawing.

## Your Assignment

**Create a drawing where we see both the inside and the outside of something. You can employ a section, cutaway, or x-ray view, or some other invented view.**

You might show a building and its contents, the exterior of a person and their inner world, a machine and its insides, etc. Have fun and use your imagination. Consider ideas related to external appearances and internal realities. Your drawing might tell a story, it could be straight-forward like a mechanical illustration, or it might be entirely personal and cryptic.

Start by developing ideas in your sketchbook. Your finished drawing should be at least 18"x24" in size and can be done in a medium of your choice, or even mixed media. The term 'drawing' is being used loosely, if your piece incorporates paint, collage elements or even found objects that is fine.

Some things to consider as you get started:

- you are welcome to work with whatever art materials you have available to you - beautiful drawings can be created with basic materials like ball point pens
- you may want to experiment with media or techniques in your visual journal before you start on your final piece
- don't work from another artist's work
- no matter your subject, think carefully about your composition
- continue your drawing to the edges of the page
- if you don't have large pieces of paper at home, you could work on any surface you do have available - you could work on several pieces of printer paper put together, on a piece of cardboard, on pages from a newspaper, on a scrap piece of plywood, etc. The surface you work on could add an interesting dimension to your piece