

A detailed drawing of a fox's head and skeleton overlaid on a field of flowers. The fox's head is on the right, looking towards the left. Its fur is rendered in shades of orange, brown, and grey. The skeleton is visible, showing the skull, spine, and ribs. The background is filled with various flowers, including large pink and purple peonies, and smaller white and pink blossoms. The overall style is realistic and detailed.

X-Ray/Inside/Outside

Drawing

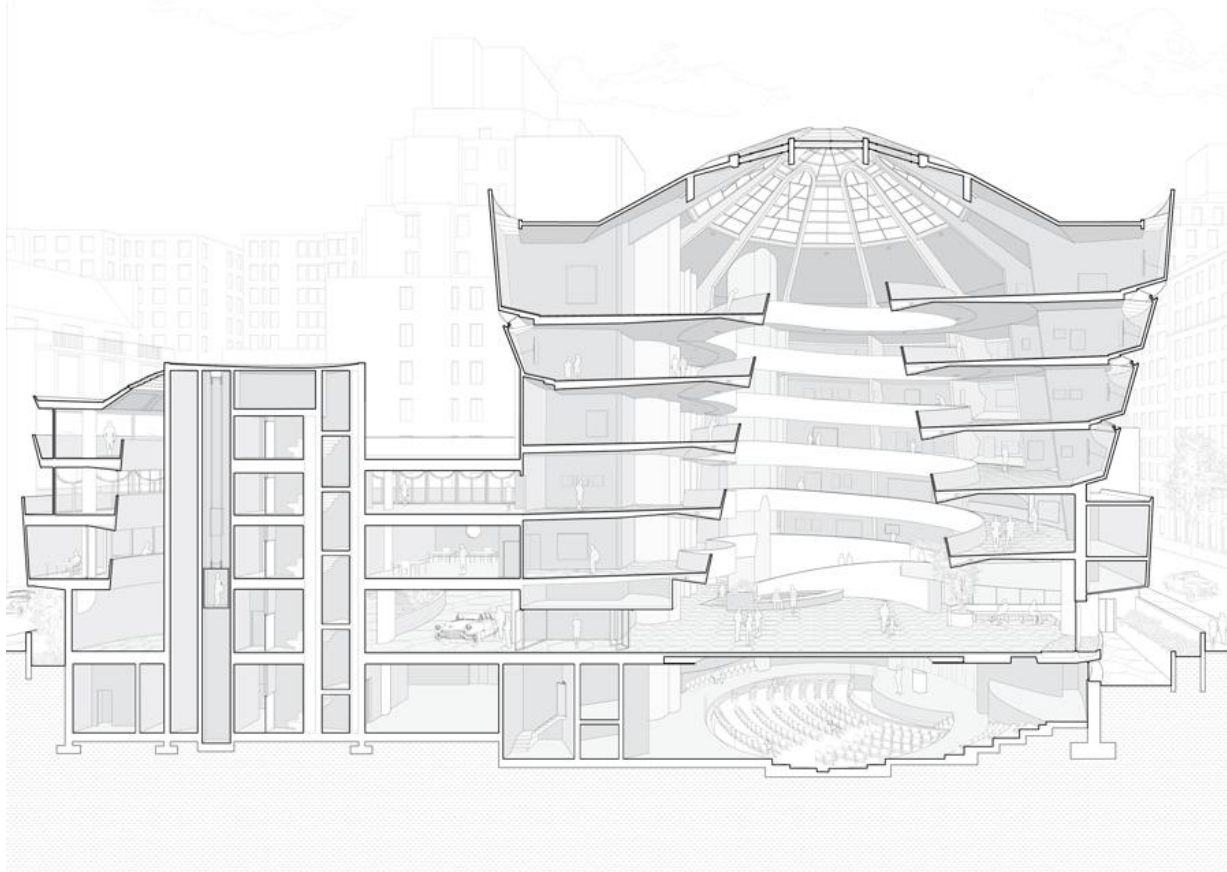
Children's Art

It is common for children to do drawings where they represent both the interior and exterior of something simultaneously, like a mother and the baby in her stomach or the exterior of a house and its contents. This is referred to as the 'Schematic Stage' in children's art.

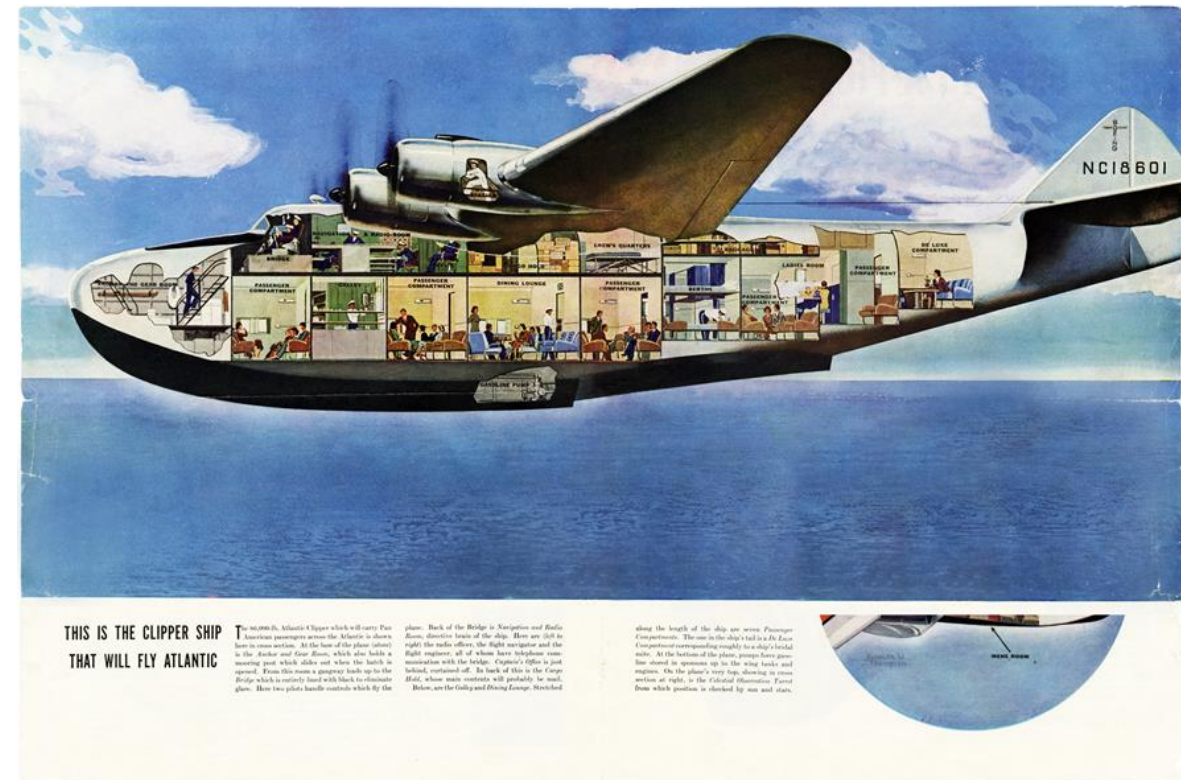


Section + Cutaway

A similar approach is commonly used in art, architecture, engineering and industrial design. Architects and engineers will often use a 'section drawing' to show hidden parts of a building or object. A similar concept is the idea of a 'cutaway' in which part of an object's surface is removed in order to show its inner workings.

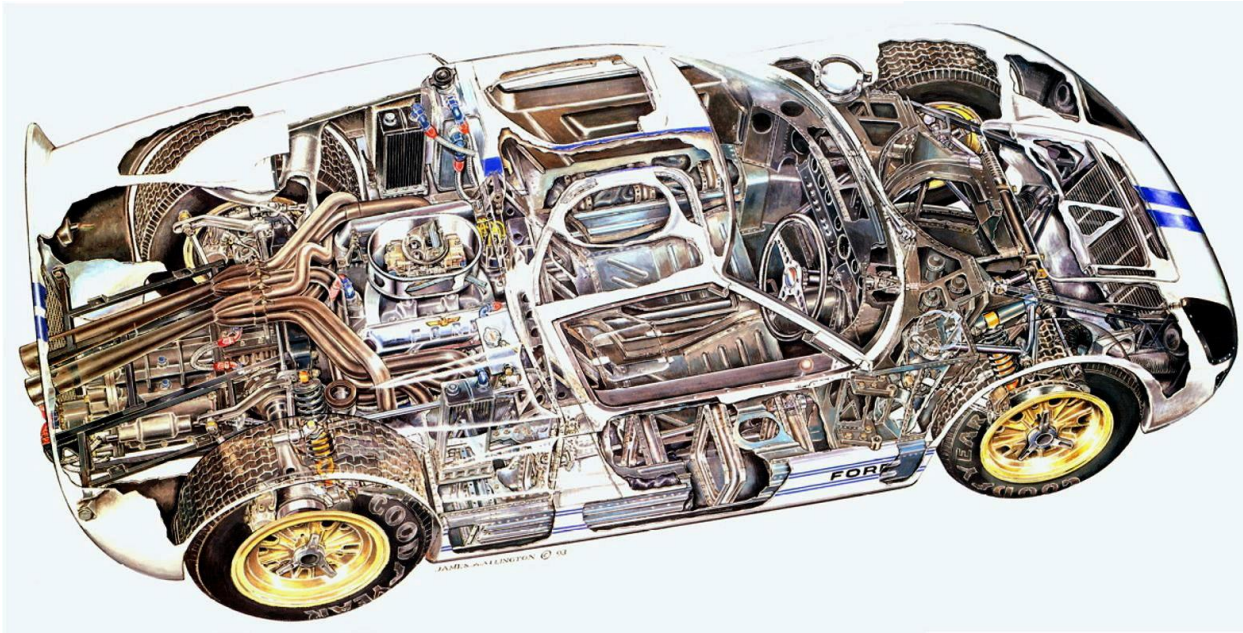


Section drawing of the Guggenheim Museum by LTL Architecture

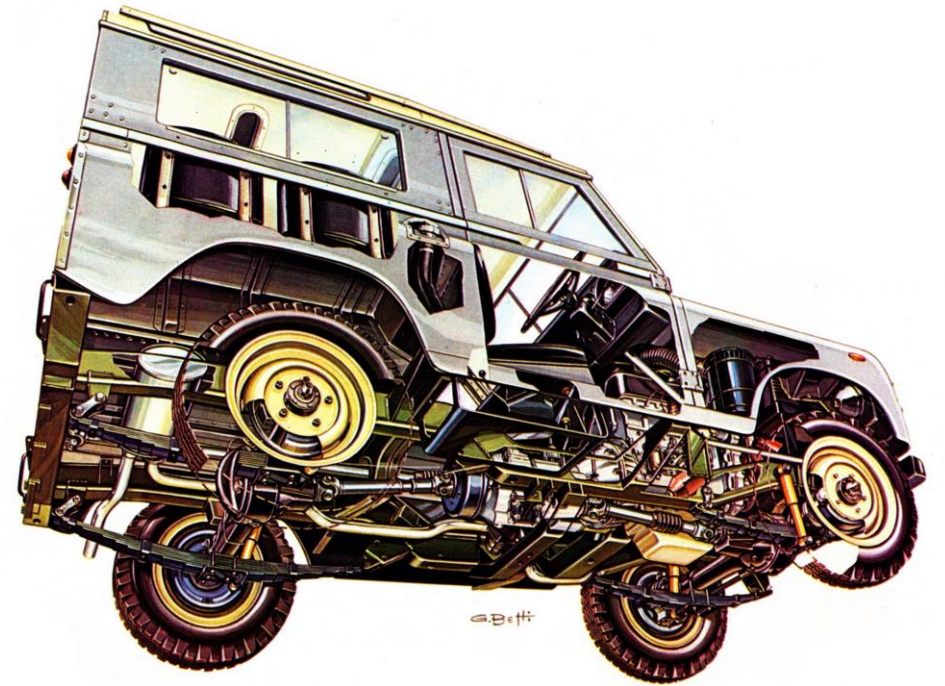


Cutaway view of a Boeing 314

These are examples of creative and highly detailed cutaway drawings by automotive artists James Allington (British) and Giulio Betti (Italian).



James Allington, *Ford GT*



Giulio Betti, *Land Rover*

A number of artists associated with the Surrealist art movement, including Frida Kahlo and René Magritte created work where the viewer is presented with the interior and exterior of a subject simultaneously.

Frida Kahlo

Mexican

1907-1954

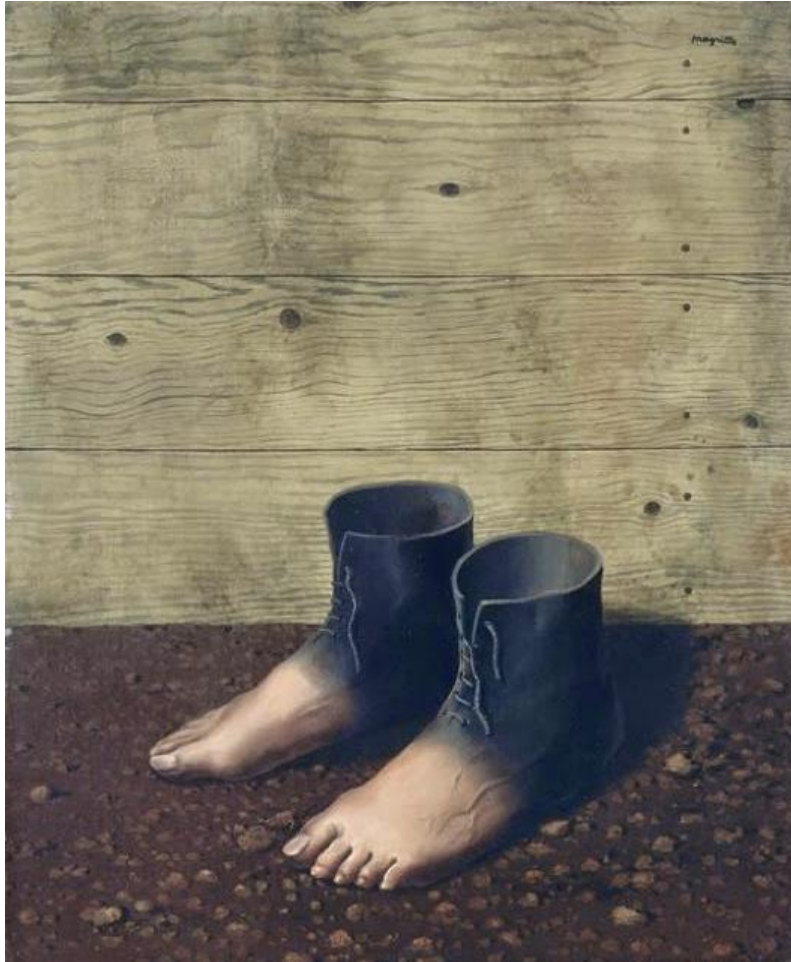
The Two Fridas is a double self-portrait, depicting two versions of Kahlo seated side by side. One is wearing a white European-style dress while the other is wearing a traditional dress from the Oaxaca region of Mexico. The hearts of both Fridas are visible right through their chests and are connected by an artery that floats between them.



The Two Fridas, 1939

René Magritte

Belgian
1896-1967



The Red Model, 1937



Clairvoyance, 1936

Norval Morrisseau

Canadian
1896-1967

Morrisseau is well known for painting in what some art historians have referred to as an X-ray style, where we see interior spaces within animals and people that have been filled with colour and pattern.



Observations of the Astral World, 1994

Nunzio Paci

Italian
b. 1977

Reminiscent of medical illustrations, Paci's work beautifully combines simultaneous views of the inside and outside of his subjects, often combining a creative element such as the bird or flowers visible in these works.



The Moment Before the Storm, 2018

Your Assignment

Create a drawing where we see both the inside and the outside of something. You can employ a section, cutaway, or x-ray view, or some other invented view.

You might show a building and its contents, the exterior of a person and their inner world, a machine and its insides, etc. Have fun and use your imagination. Consider ideas related to external appearances and internal realities. Your drawing might tell a story, it could be straight-forward like a mechanical illustration, or it might be entirely personal and cryptic.